



## กฎกระทรวง

ฉบับที่ ๕๓๕ (พ.ศ. ๒๕๒๔)

ออกตามความในพระราชบัญญัติป่าสงวนแห่งชาติ

พ.ศ. ๒๕๐๗

อาศัยอำนาจตามความในมาตรา ๕ และมาตรา ๖ แห่งพระราชบัญญัติป่าสงวนแห่งชาติ พ.ศ. ๒๕๐๗ รัฐมนตรีว่าการกระทรวงเกษตรและสหกรณ์ออกกฎกระทรวงไว้ดังต่อไปนี้

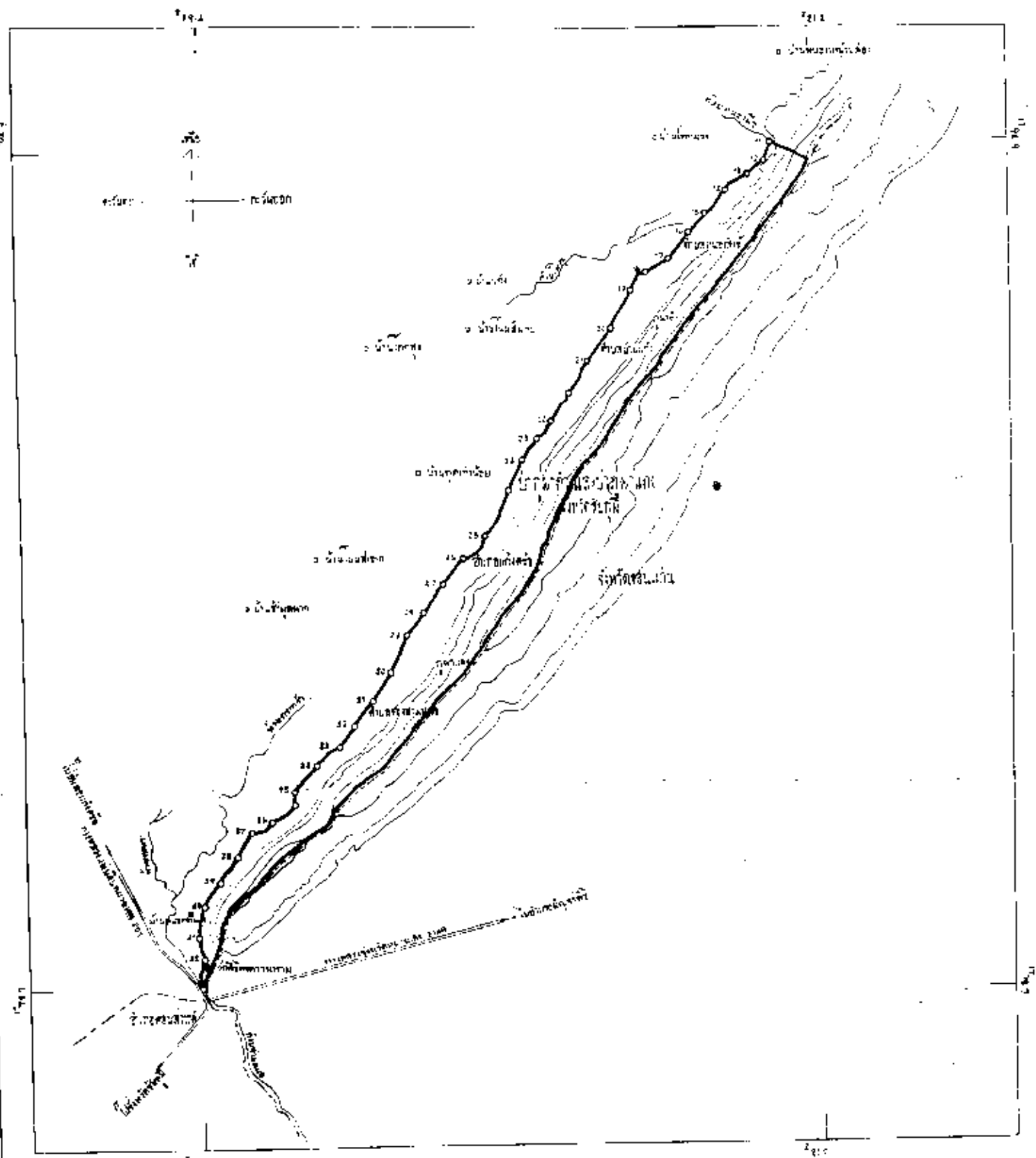
ให้ป่าภูผาคำและป่าภูผาแดง ในท้องที่ตำบลหนองสังข์ ตำบลบ้านแก้ง และตำบลช่องสามหมอ อำเภอแก้งคร้อ จังหวัดชัยภูมิ ภายในแนวเขตตามแผนที่ท้ายกฎกระทรวงนี้ เป็นป่าสงวนแห่งชาติ

ให้ไว้ ณ วันที่ ๕ เมษายน พ.ศ. ๒๕๒๔

อาณัติ อาภาภิรม

รัฐมนตรีว่าการกระทรวงเกษตรและสหกรณ์

រដ្ឋស្ថាប័ន  
 លេខ ២៧ (២៧ ២៥២៤)  
 គណៈកម្មាធិការស្រាវជ្រាវស្ថិតិ និង គណនេយ្យ  
 ភ្នំពេញ ថ្ងៃទី ១៥ ខែ ១១ ឆ្នាំ ១៩៦៤  
 លេខ ២៧ ២៥២៤



- សញ្ញា**
- ផ្លូវជាតិលេខ ១
  - ផ្លូវជាតិលេខ ២
  - ផ្លូវជាតិលេខ ៣
  - ផ្លូវជាតិលេខ ៤
  - ផ្លូវជាតិលេខ ៥
  - ផ្លូវជាតិលេខ ៦
  - ផ្លូវជាតិលេខ ៧
  - ផ្លូវជាតិលេខ ៨
  - ផ្លូវជាតិលេខ ៩
  - ផ្លូវជាតិលេខ ១០
  - ផ្លូវជាតិលេខ ១១
  - ផ្លូវជាតិលេខ ១២
  - ផ្លូវជាតិលេខ ១៣
  - ផ្លូវជាតិលេខ ១៤
  - ផ្លូវជាតិលេខ ១៥
  - ផ្លូវជាតិលេខ ១៦
  - ផ្លូវជាតិលេខ ១៧
  - ផ្លូវជាតិលេខ ១៨
  - ផ្លូវជាតិលេខ ១៩
  - ផ្លូវជាតិលេខ ២០
  - ផ្លូវជាតិលេខ ២១
  - ផ្លូវជាតិលេខ ២២
  - ផ្លូវជាតិលេខ ២៣
  - ផ្លូវជាតិលេខ ២៤
  - ផ្លូវជាតិលេខ ២៥
  - ផ្លូវជាតិលេខ ២៦
  - ផ្លូវជាតិលេខ ២៧
  - ផ្លូវជាតិលេខ ២៨
  - ផ្លូវជាតិលេខ ២៩
  - ផ្លូវជាតិលេខ ៣០
  - ផ្លូវជាតិលេខ ៣១
  - ផ្លូវជាតិលេខ ៣២
  - ផ្លូវជាតិលេខ ៣៣
  - ផ្លូវជាតិលេខ ៣៤
  - ផ្លូវជាតិលេខ ៣៥
  - ផ្លូវជាតិលេខ ៣៦
  - ផ្លូវជាតិលេខ ៣៧
  - ផ្លូវជាតិលេខ ៣៨
  - ផ្លូវជាតិលេខ ៣៩
  - ផ្លូវជាតិលេខ ៤០
  - ផ្លូវជាតិលេខ ៤១
  - ផ្លូវជាតិលេខ ៤២
  - ផ្លូវជាតិលេខ ៤៣
  - ផ្លូវជាតិលេខ ៤៤
  - ផ្លូវជាតិលេខ ៤៥
  - ផ្លូវជាតិលេខ ៤៦
  - ផ្លូវជាតិលេខ ៤៧
  - ផ្លូវជាតិលេខ ៤៨
  - ផ្លូវជាតិលេខ ៤៩
  - ផ្លូវជាតិលេខ ៥០
  - ផ្លូវជាតិលេខ ៥១
  - ផ្លូវជាតិលេខ ៥២
  - ផ្លូវជាតិលេខ ៥៣
  - ផ្លូវជាតិលេខ ៥៤
  - ផ្លូវជាតិលេខ ៥៥
  - ផ្លូវជាតិលេខ ៥៦
  - ផ្លូវជាតិលេខ ៥៧
  - ផ្លូវជាតិលេខ ៥៨
  - ផ្លូវជាតិលេខ ៥៩
  - ផ្លូវជាតិលេខ ៦០
  - ផ្លូវជាតិលេខ ៦១
  - ផ្លូវជាតិលេខ ៦២
  - ផ្លូវជាតិលេខ ៦៣
  - ផ្លូវជាតិលេខ ៦៤
  - ផ្លូវជាតិលេខ ៦៥
  - ផ្លូវជាតិលេខ ៦៦
  - ផ្លូវជាតិលេខ ៦៧
  - ផ្លូវជាតិលេខ ៦៨
  - ផ្លូវជាតិលេខ ៦៩
  - ផ្លូវជាតិលេខ ៧០
  - ផ្លូវជាតិលេខ ៧១
  - ផ្លូវជាតិលេខ ៧២
  - ផ្លូវជាតិលេខ ៧៣
  - ផ្លូវជាតិលេខ ៧៤
  - ផ្លូវជាតិលេខ ៧៥
  - ផ្លូវជាតិលេខ ៧៦
  - ផ្លូវជាតិលេខ ៧៧
  - ផ្លូវជាតិលេខ ៧៨
  - ផ្លូវជាតិលេខ ៧៩
  - ផ្លូវជាតិលេខ ៨០
  - ផ្លូវជាតិលេខ ៨១
  - ផ្លូវជាតិលេខ ៨២
  - ផ្លូវជាតិលេខ ៨៣
  - ផ្លូវជាតិលេខ ៨៤
  - ផ្លូវជាតិលេខ ៨៥
  - ផ្លូវជាតិលេខ ៨៦
  - ផ្លូវជាតិលេខ ៨៧
  - ផ្លូវជាតិលេខ ៨៨
  - ផ្លូវជាតិលេខ ៨៩
  - ផ្លូវជាតិលេខ ៩០
  - ផ្លូវជាតិលេខ ៩១
  - ផ្លូវជាតិលេខ ៩២
  - ផ្លូវជាតិលេខ ៩៣
  - ផ្លូវជាតិលេខ ៩៤
  - ផ្លូវជាតិលេខ ៩៥
  - ផ្លូវជាតិលេខ ៩៦
  - ផ្លូវជាតិលេខ ៩៧
  - ផ្លូវជាតិលេខ ៩៨
  - ផ្លូវជាតិលេខ ៩៩
  - ផ្លូវជាតិលេខ ១០០

រដ្ឋស្ថាប័ន  
 លេខ ២៧ (២៧ ២៥២៤)  
 គណៈកម្មាធិការស្រាវជ្រាវស្ថិតិ និង គណនេយ្យ  
 ភ្នំពេញ ថ្ងៃទី ១៥ ខែ ១១ ឆ្នាំ ១៩៦៤  
 លេខ ២៧ ២៥២៤

หมายเหตุ:— เหตุผลในการประกาศใช้กฎกระทรวงฉบับนี้ คือ เนื่องจากป่าภูผาดำ และป่าภูผาแดง ในท้องที่ตำบลหนองสรวง ตำบลบ้านแก้ง และตำบลช่องสามหมอ อำเภอแก้งคร้อ จังหวัดชัยภูมิ เนื้อประมาณ ๓๓,๕๗๕ ไร่ ไร่ไม้เต็ง ไม้รัง ไม้ประดู่ ไม้มะค่าแต้ ไม้แดง ไม้เหียง ไม้พลวง และไม้ชนิดอื่นที่มีค่าจำนวนมาก และมีของป่ากับทรัพยากรธรรมชาติอื่นด้วย สมควรกำหนดให้เป็นป่าสงวนแห่งชาติ เพื่อรักษาสภาพป่า ไม้ ของป่า และทรัพยากรธรรมชาติอื่นไว้ ให้จําเป็นต้องออกกฎกระทรวงนี้